



1 8 2 3



Chandelier 6725-L-16 "Metropolitan"

The Metropolitan Family

The Metropolitan Chandelier was designed by Hans Harald Rath for the Metropolitan Opera in New York. We were awarded the contract to deliver the chandeliers by the Republic of Austria as a donation in gratitude for the United States aid in the European Recovery Programme.

The inspiration to this design was supplied by the Architect of the Met, Edward K. Harrisson who presented pictures of distant galaxies. As a first prototype to present the design the family myth reports of a potato with tooth picks. After over 40 years this line is still our best seller.

Design: Hans Harald Rath, 1963; Modern
Material: Brass, lead-free, hand cut crystal;
Finish: Nickel

Special requests: Metal parts in different finishes, sputnik elements in different colour or metal finish,
elliptical layout

Dia.: 100 cm, H.: 55 cm; Weight: 19 kg
Lights: 16 x E14; Max. Wattage: 960 W

LOBMEYER



1 8 2 3



Chandelier 6725-D-11 "Metropolitan"

The Metropolitan Family

The Metropolitan Chandelier was designed by Hans Harald Rath for the Metropolitan Opera in New York. We were awarded the contract to deliver the chandeliers by the Republic of Austria as a donation in gratitude for the United States aid in the European Recovery Programme.

The inspiration to this design was supplied by the Architect of the Met, Edward K. Harrisson who presented pictures of distant galaxies. As a first prototype to present the design the family myth reports of a potato with tooth picks. After over 40 years this line is still our best seller.

Design: Hans Harald Rath, 1963; Modern
Material: Brass, lead-free, hand cut crystal;
Finish: Nickel

Dia.: 60 cm, H.: 40 cm; Weight: 9 kg
Lights: 11 x E14; Max. Wattage: 660 W

Special requests: Metal parts in different finishes, sputnik elements in different colour or metal finish

LOBMEYR



1 8 2 3



Chandelier 6725-L-13 "Metropolitan"

The Metropolitan Family

The Metropolitan Chandelier was designed by Hans Harald Rath for the Metropolitan Opera in New York. We were awarded the contract to deliver the chandeliers by the Republic of Austria as a donation in gratitude for the United States aid in the European Recovery Programme.

The inspiration to this design was supplied by the Architect of the Met, Edward K. Harrisson who presented pictures of distant galaxies. As a first prototype to present the design the family myth reports of a potato with tooth picks. After over 40 years this line is still our best seller.

Design: Hans Harald Rath, 1963; Modern
Material: Brass, lead-free, hand cut crystal;
Finish: Nickel

Dia.: 76 cm, H.: 45 cm; Weight: 11 kg
Lights: 13 x E14; Max. Wattage: 780 W

Special requests: Metal parts in different finishes, sputnik elements in different colour or metal finish

LOBMEYR



1 8 2 3



Chandelier 6725-C-16 "Metropolitan"

The Metropolitan Family

The Metropolitan Chandelier was designed by Hans Harald Rath for the Metropolitan Opera in New York. We were awarded the contract to deliver the chandeliers by the Republic of Austria as a donation in gratitude for the United States' aid in the European Recovery Programme.

The inspiration to this design was supplied by the Architect of the Met, Edward K. Harrison who presented pictures of distant galaxies. As a first prototype to present the design the family myth reports of a potato with tooth picks. After over 40 years this line is still our best seller.

Design: Hans Harald Rath, 1963; Modern
Material: Brass, lead-free, hand cut crystal;
Finish: Nickel

Dia.: 85 cm, H.: 48 cm; Weight: 16 kg
Lights: 16 x E14; Max. Wattage: 960 W

Special requests: Metal parts in different finishes, sputnik elements in different colour or metal finish,
elliptical layout

LOBMEYER



1 8 2 3



Chandelier 6725-L-22 "Metropolitan"

The Metropolitan Family

The Metropolitan Chandelier was designed by Hans Harald Rath for the Metropolitan Opera in New York. We were awarded the contract to deliver the chandeliers by the Republic of Austria as a donation in gratitude for the United States aid in the European Recovery Programme.

The inspiration to this design was supplied by the Architect of the Met, Edward K. Harrisson who presented pictures of distant galaxies. As a first prototype to present the design the family myth reports of a potato with tooth picks. After over 40 years this line is still our best seller.

Design: Hans Harald Rath, 1963; Modern
Material: Brass, lead-free, hand cut crystal;
Finish: Nickel

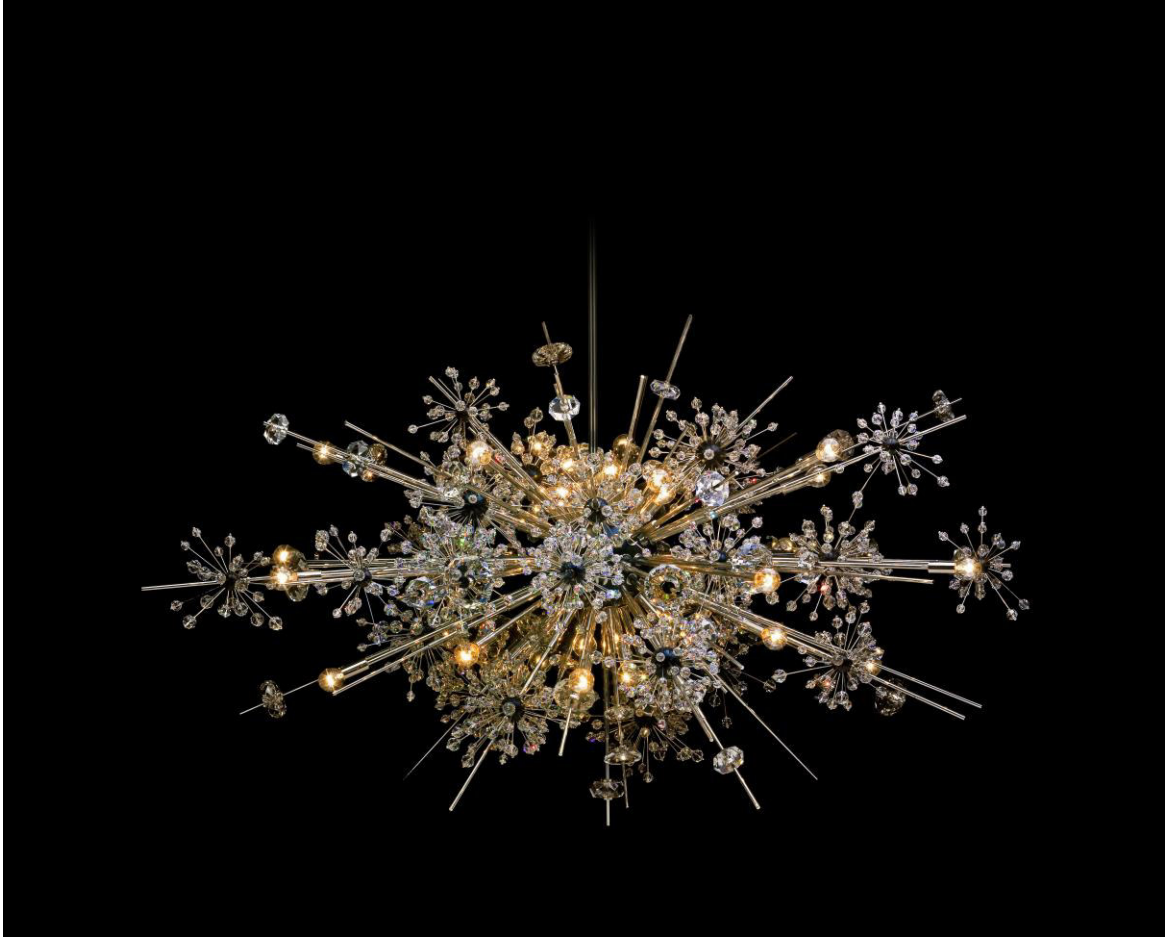
Special requests: Metal parts in different finishes, sputnik elements in different colour or metal finish,
elliptical layout

Dia.: 116 cm, H.: 60 cm; Weight: 23 kg
Lights: 22 x E14; Max. Wattage: 1.320 W

LOBMEYR



1 8 2 3



Chandelier 6725-L-26 "Metropolitan"

The Metropolitan Family

The Metropolitan Chandelier was designed by Hans Harald Rath for the Metropolitan Opera in New York. We were awarded the contract to deliver the chandeliers by the Republic of Austria as a donation in gratitude for the United States aid in the European Recovery Programme.

The inspiration to this design was supplied by the Architect of the Met, Edward K. Harrisson who presented pictures of distant galaxies. As a first prototype to present the design the family myth reports of a potato with tooth picks. After over 40 years this line is still our best seller.

(Image shows variant 6725-L-30 with dia. 160 cm.)

Design: Hans Harald Rath, 1963; Modern
Material: Brass, lead-free, hand cut crystal;
Finish: Nickel

Dia.: 130 cm, H.: 65 cm; Weight: 40 kg
Lights: 26 x E14; Max. Wattage: 1560 W

Special requests: Metal parts in different finishes, sputnik elements in different colour or metal finish,
elliptical layout

LOBMEYR



1 8 2 3



Chandelier 6725-L-30 "Metropolitan"

The Metropolitan Family

The Metropolitan Chandelier was designed by Hans Harald Rath for the Metropolitan Opera in New York. We were awarded the contract to deliver the chandeliers by the Republic of Austria as a donation in gratitude for the United States aid in the European Recovery Programme.

The inspiration to this design was supplied by the Architect of the Met, Edward K. Harrisson who presented pictures of distant galaxies. As a first prototype to present the design the family myth reports of a potato with tooth picks. After over 40 years this line is still our best seller.

Design: Hans Harald Rath, 1963; Modern
Material: Brass, lead-free, hand cut crystal;
Finish: Nickel

Dia.: 160 cm, H.: 72 cm; Weight: 70 kg
Lights: 30 x E14; Max. Wattage: 1800 W

Special requests: Metal parts in different finishes, sputnik elements in different colour or metal finish,
elliptical layout

LOBMEYER



1 8 2 3



Chandelier 6725-L-36 "Metropolitan"

The Metropolitan Family

The Metropolitan Chandelier was designed by Hans Harald Rath for the Metropolitan Opera in New York. We were awarded the contract to deliver the chandeliers by the Republic of Austria as a donation in gratitude for the United States aid in the European Recovery Programme.

The inspiration to this design was supplied by the Architect of the Met, Edward K. Harrison who presented pictures of distant galaxies. As a first prototype to present the design the family myth reports of a potato with tooth picks. After over 40 years this line is still our best seller.

Design: Hans Harald Rath, 1963; Modern

Material: Brass, lead-free, hand cut crystal;

Finish: Nickel

Special requests: Metal parts in different finishes, sputnik elements in different colour or metal finish, elliptical layout

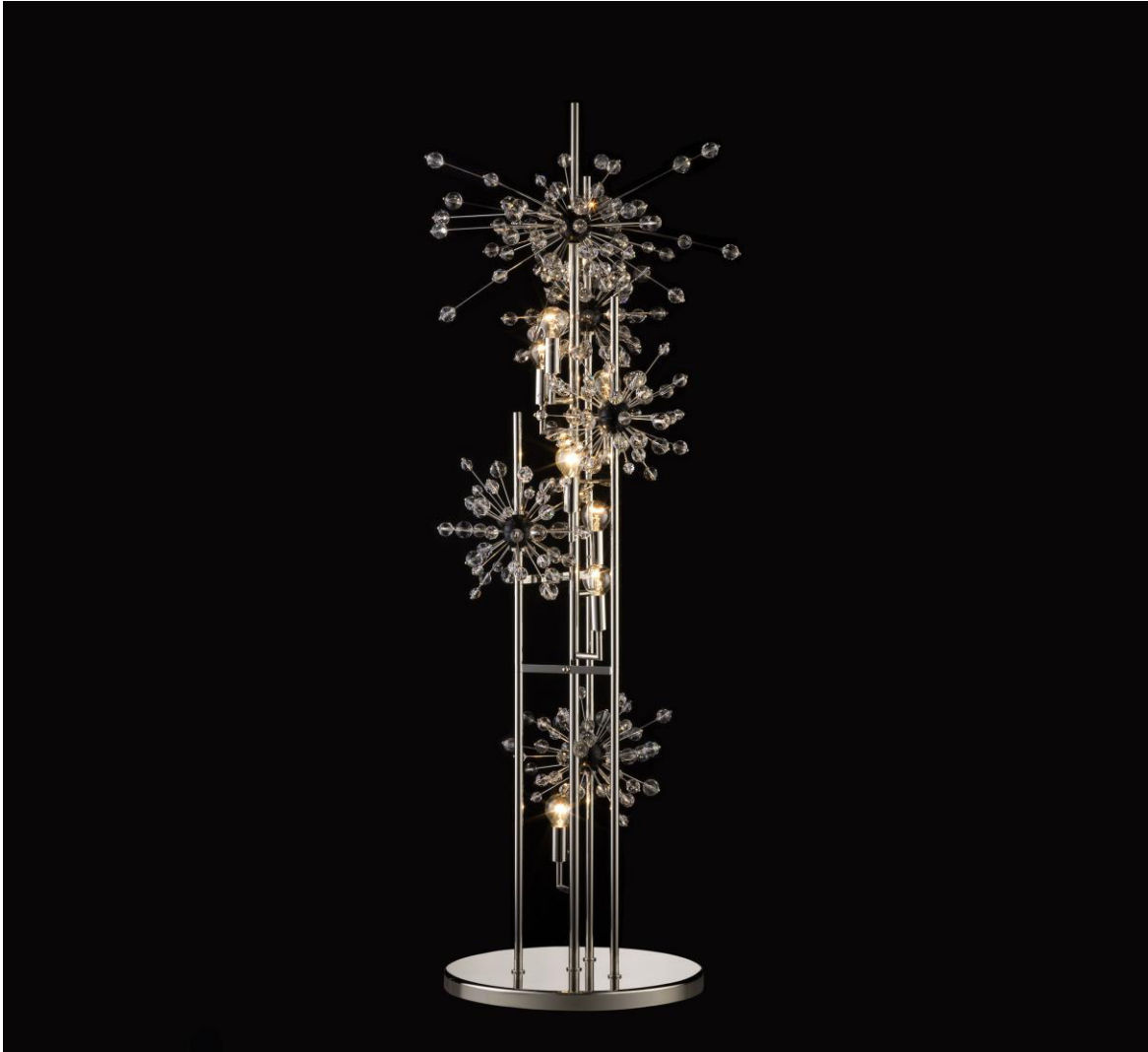
Dia.: 180 cm, H.: 90 cm; Weight: 75 kg

Lights: 36 x E14; Max. Wattage: 2160 W

LOBMEYR



1 8 2 3



Floor Lamp 7077-7 "Metropolitan"

The Metropolitan Family

This wall floor lamp was an early design of Peter Rath following the sudden death of his father Hans Harald. It was based on the very successful chandeliers Hans Harald Rath designed for the Metropolitan Opera in New York.

The frame of the fixture is made from brass and carefully polished by hand to be covered in a nickel finish. This is then decorated with multiple sputnik elements, the wooden balls with the Swarovski crystals that became a landmark of the Metropolitan Opera in New York.

This design is a perfect addition to the Metropolitan Chandeliers to complete any lounge area or other room composition.

Design: Peter Rath, 1974; Modern

Material: Brass, lead-free, hand cut crystal;

Finish: Nickel

Special requests: Metal parts in different finishes, bespoke height

Dia.: 48 cm, H.: 160 cm; Weight: 20 kg

Lights: 7 candles; Max. Wattage: 420 W

LOBMEYER