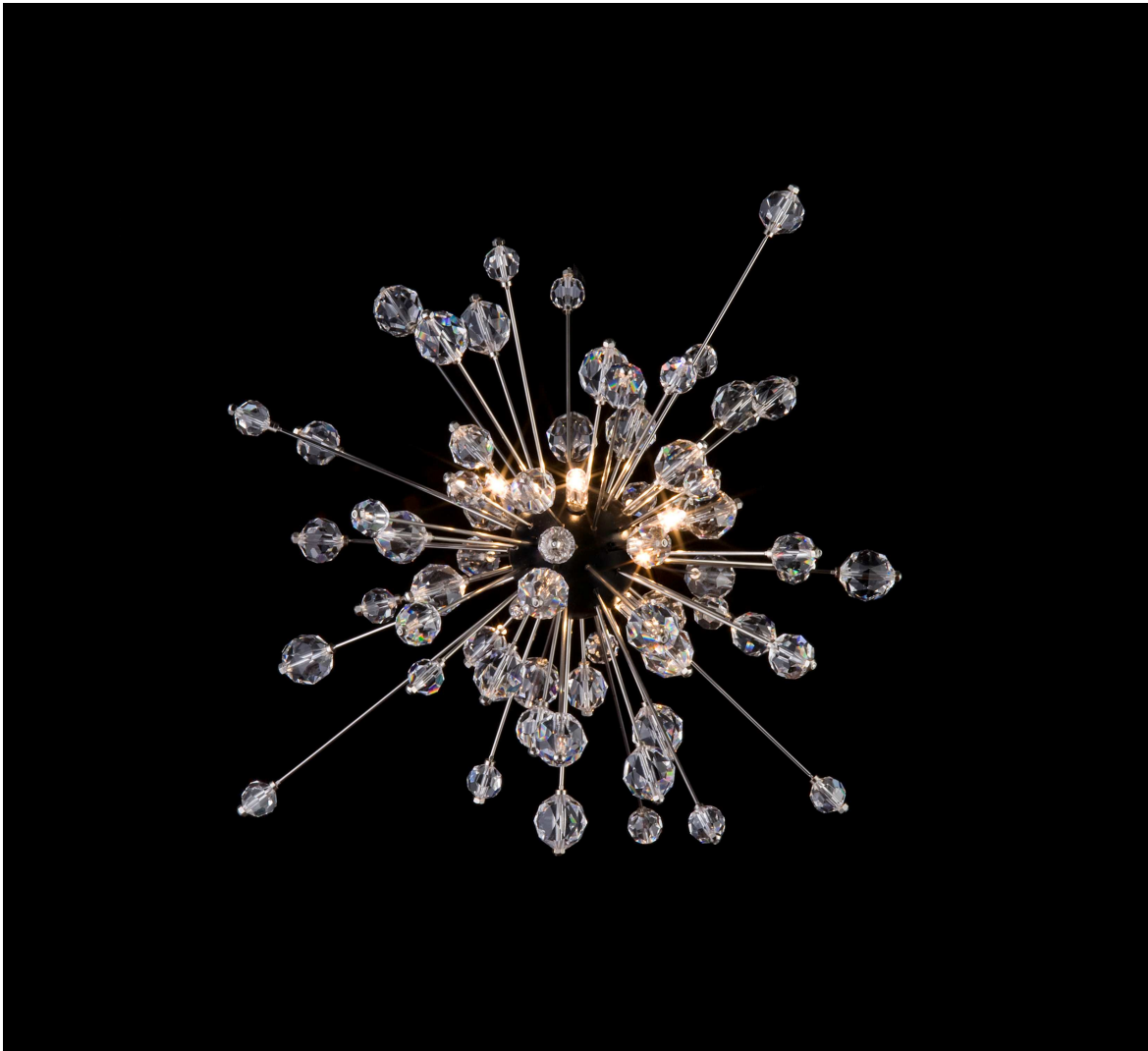




1 8 2 3



Pendant Lamp 42470-6 "Mini-Sputnik"

The Metropolitan Family

The chandeliers we delivered for the New York Metropolitan Opera in 1966 became icons of lighting design. As we took care of the restoration of the chandeliers of the Met in 2008 and about 1.000 pieces of sputniks have been through our hands we realised how lovely those elements were. So our craftsmen had the idea to create small lighting fixtures from these elements and started tinkering. Finally we arrived at a working object resembling a complete Metropolitan Chandelier in a very small scale.

The sputnik element as main stylistic feature of the prominent chandeliers are the base of this tiny lighting fixture. It can be mounted individually, used as a table lamp or just put on the floor. In combination with a Met Chandelier they can be installed like a galaxy or form clusters of multiple sputniks on their own. There are many applications of this item of which we merely tried a few.

Design: Lobmeyr, 2009; Modern

Material: Wood, steel, Swarovski Crystal; Finish: black

Special requests: technical periphery depending on application, various suspensions

Dia.: 30 cm spherical; Weight: 1 kg

Lights: 6 x 12V G4; Max. Watt.: 60 W

LOBMEYR



1 8 2 3



Pendant Lamp 42470-9 "Mini-Sputnik"

The Metropolitan Family

The chandeliers we delivered for the New York Metropolitan Opera in 1966 became icons of lighting design. As we took care of the restoration of the chandeliers of the Met in 2008 and about 1.000 pieces of sputniks have been through our hands we realised how lovely those elements were. So our craftsmen had the idea to create small lighting fixtures from these elements and started tinkering. Finally we arrived at a working object resembling a complete Metropolitan Chandelier in a very small scale.

The sputnik element as main stilistic feature of the prominent chandeliers are the base of this tiny lighting fixture. It can be mounted individually, used as a table lamp or just put on the floor. In combination with a Met Chandelier they can be installed like a galaxy or form clusters of multiple sputniks on their own. There are many applications of this item of which we merely tried a few.

Design: Lobmeyr, 2009; Modern

Material: Wood, steel, Swarovski Crystal; Finish: black

Special requests: technical periphery depending on application, various suspensions

Dia.: 40 cm spherical; Weight: 1 kg

Lights: 9 x 12V G4; Max. Watt.: 90 W

LOBMEYR



1 8 2 3



Ceiling Fixture 42470-S "Sputnik Cascade"

The Metropolitan Family

Making use of the Sputnik Elements we developed after the restoration of the original chandeliers for the Metropolitan Opera in 2008 we devised this miniature cascade as homage to the installation of the chandelier in the Opera.

The Mini-Sputniks are illuminated using low voltage halogen bulbs. They come in two sizes of 6 and 9 lights. These are suspended from free swinging brass poles. In between non-illuminated sputniks as on the chandeliers are placed to augment the impression.

The ceiling mirror is from brass with a nickel finish and houses the ceiling mount and the electric periphery. Effectively every shape and size is possible though 90 cm is the largest feasible size for round versions. Other shapes such as squares, rectangles or twists and curls are also possible. The shiny surface of the mirror gives the impression as if the cascade continued infinitely aloft.

Design: Lobmeyr 2009; Modern

Dimensions: Variable

Material: Brass, wood, lead-free, hand cut crystals; Finish: Nickel

Lights: Variable

Special requests: Complete flexibility in numbers and types, wide flexibility in shapes and sizes.

LOBMEYR



1 8 2 3

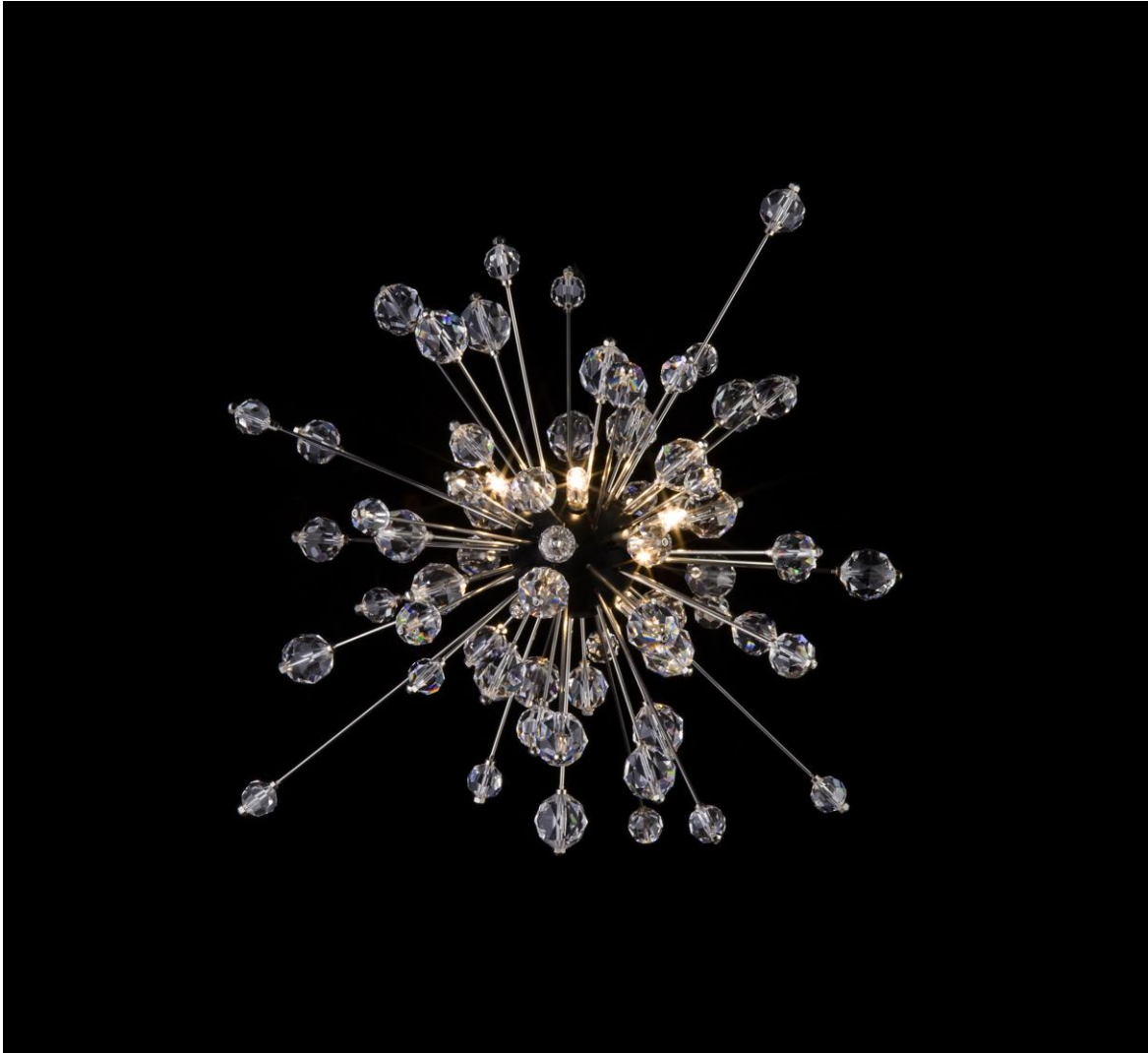


Table Lamp 42470-TL-6 "Mini-Sputnik"

The Metropolitan Family

The chandeliers we delivered for the New York Metropolitan Opera in 1966 became icons of lighting design. As we took care of the restoration of the chandeliers of the Met in 2008 and about 1.000 pieces of sputniks have been through our hands we realised how lovely those elements were. So our craftsmen had the idea to create small lighting fixtures from these elements and started tinkering. Finally we arrived at a working object resembling a complete Metropolitan Chandelier in a very small scale. The sputnik element as main stilistic feature of the prominent chandeliers are the base of this tiny lighting fixture. It can be mounted individually, used as a table lamp or just put on the floor. In combination with a Met Chandelier they can be installed like a galaxy or form clusters of multiple sputniks on their own. There are many applications of this item of which we merely tried a few.

Design: Lobmeyr, 2009; Modern

Material: Wood, steel, lead-free, hand cut crystals

Finish: black

Special requests: technical periphery depending on application, various suspensions

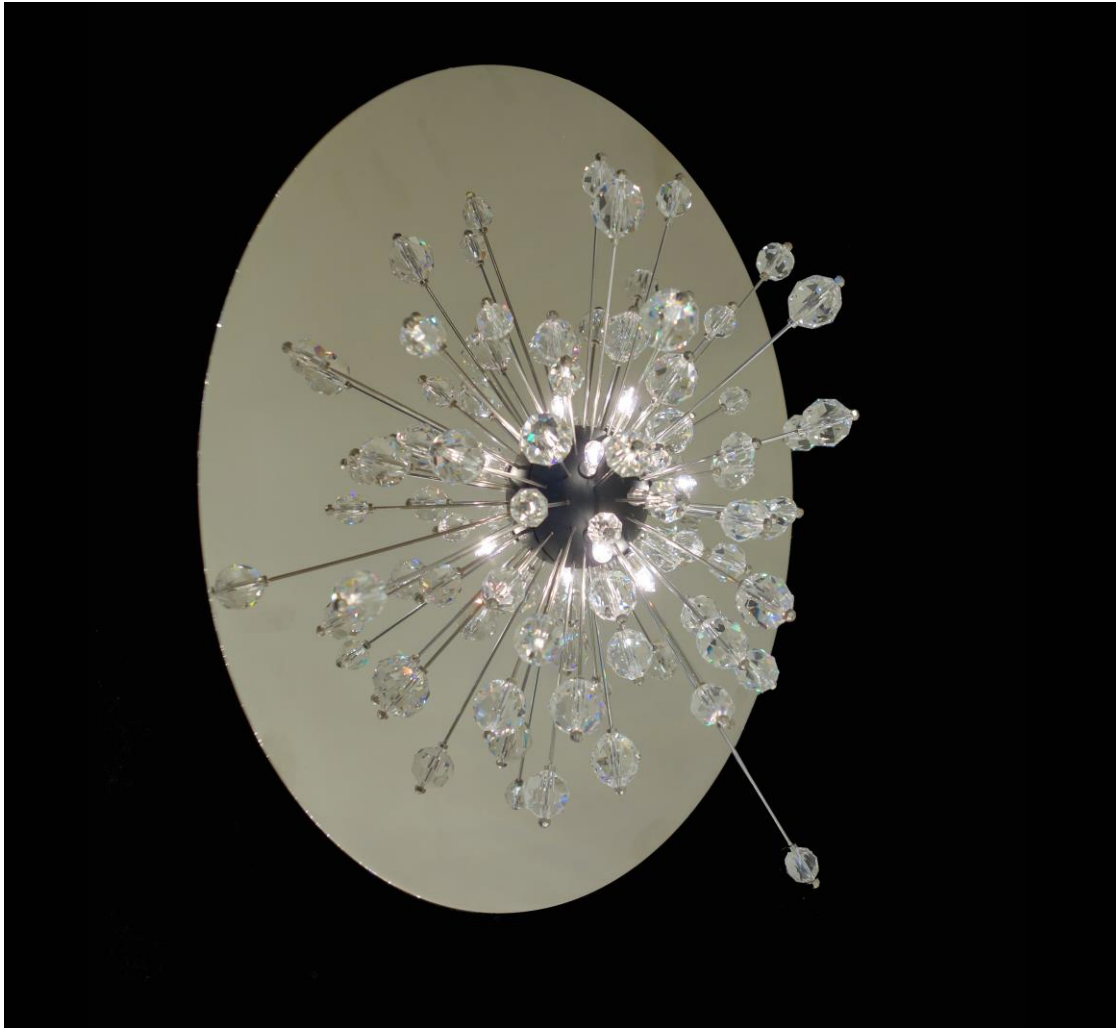
Dia.: 30 cm spherical; Weight: 1 kg

Lights: 6 x 12V G4; Max. Watt.: 60 W

LOBMEYR



1 8 2 3



Wall sconce 42470-5 "Mini-Sputnik"

The Metropolitan Family

The chandeliers we delivered for the New York Metropolitan Opera in 1966 became icons of lighting design. As we took care of the restoration of the chandeliers of the Met in 2008 and about 1.000 pieces of sputniks have been through our hands we realised how lovely those elements were. So our craftsmen had the idea to create small lighting fixtures from these elements and started tinkering. Finally we arrived at a working object resembling a complete Metropolitan Chandelier in a very small scale. The sputnik element as main stylistic feature of the prominent chandeliers are the base of this tiny lighting fixture. It can be mounted individually, used as a table lamp or just put on the floor. In combination with a Met Chandelier they can be installed like a galaxy or form clusters of multiple sputniks on their own. There are many applications of this item of which we merely tried a few.

Design: Lobmeyr, 2009; Modern

Material: Wood, steel, lead-free, hand cut crystals;

Finish: black

Special requests: technical periphery depending on application, various suspensions

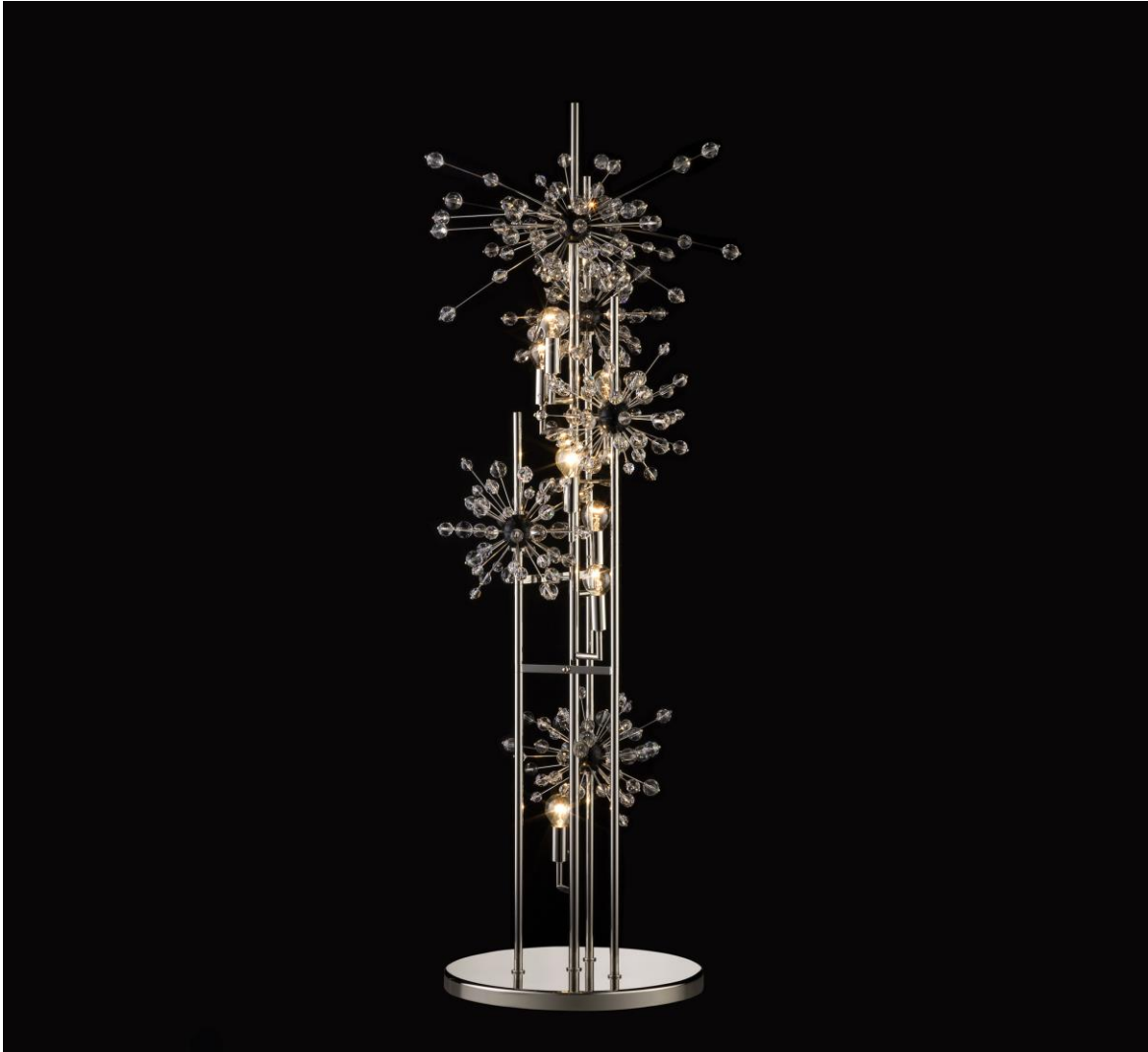
Dia.: 40 cm spherical; Weight: 1kg

Lights: 9 x 12V G4; Max. Watt.: 90 W

LOBMEYR



1 8 2 3



Floor Lamp 7077-7 "Metropolitan"

The Metropolitan Family

This wall floor lamp was an early design of Peter Rath following the sudden death of his father Hans Harald. It was based on the very successful chandeliers Hans Harald Rath designed for the Metropolitan Opera in New York.

The frame of the fixture is made from brass and carefully polished by hand to be covered in a nickel finish. This is then decorated with multiple sputnik elements, the wooden balls with the Swarovski crystals that became a landmark of the Metropolitan Opera in New York.

This design is a perfect addition to the Metropolitan Chandeliers to complete any lounge area or other room composition.

Design: Peter Rath, 1974; Modern

Material: Brass, lead-free, hand cut crystal;

Finish: Nickel

Special requests: Metal parts in different finishes, bespoke height

Dia.: 48 cm, H.: 160 cm; Weight: 20 kg

Lights: 7 candles; Max. Wattage: 420 W

LOBMEYER